

. 42 700

-1

(M)

-
46.06

(H)

41.00

:

42

(

)
%8.87

(
%7.75

(M)

)
(H)

(M)

(H)

%38.44 %58.15

%40.59 %59.68

42

:

(2000 FAO)

%25

) 42

(2006

%11.22

. (2010) 35

%12.52

(1993 Ewart)

(1994 Lilburn)

(2000 Remignon)

. (2005)

. 2011 / 2 / 7

. 2011 / 9 / 19

.1

(%)	(%)	
65	60	
30	35	(%48.5)
4	4	**
1	1	
100	100	
		*
20.07	22.08	(%)
2999.5	2954	(/)
0.97	1.22	
0.59	0.51	
0.39	0.38	+
0.73	0.75	
0.54	0.55	

. (1994)NRC

*
**

(2)

42

(1998) Moran Vieira (1996) Yalcin
 700 (2007) Hulet %66.30 65.90
 (2005) Nazligul . 44

(Compensative growth)

(M) (H)
 1568.00 2170.00 %76.17 %76.66 1657.4 2273.70
 . %72.23 %76.17
 (2006) 42
 . (2011)

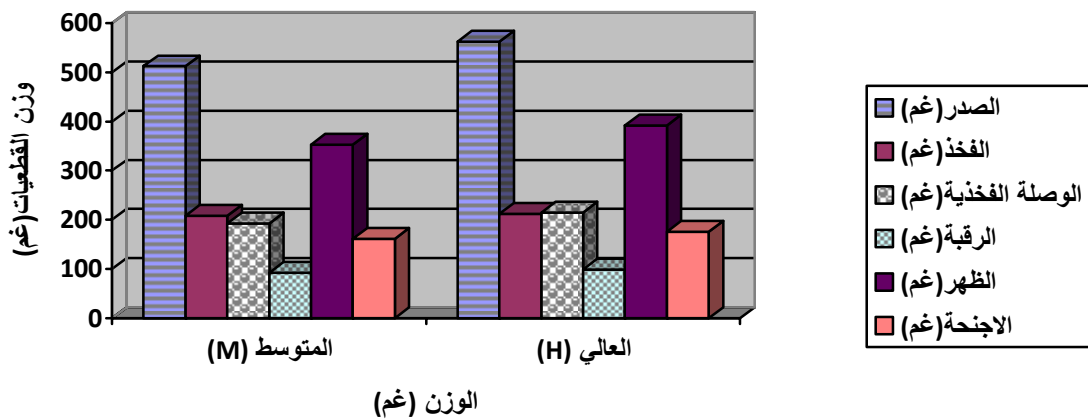
. 2

42 700

±				()
(%)	(%)	()	()	
0.82±72.23	0.52±76.17	44.74±1568.0	37.86±2170.6	(M)
1.63±72.83	1.89±76.66	108.49±1657.4	122.35±2273.7	(H)
N.S.	N.S.	N.S.	N.S.	

(1)

42	()	()	()	()	()
(H)					(M)
(H)					(M)
392.07	99.03	215.53	211.80	561.97	(M)
161.83	352.80	92.77	192.70	207.80	512.17
(H)					175.43
607.40	912.67	666.53	989.30		(M)
		%8.87	%7.75		
(M)		(H)			



. 1

42 700

(3)

42 () ()
(P<0.05)
% 6.32 %13.01 % 33.90 (M) (H)
%10.33 %22.50 %5.61 %12.27 %32.65 %10.60 %23.67
(2007) Wolanski
(2008) Abiola
%40.59 %59.68 (M) (H)
%38.44 %58.15
%5.30 %2.56
. (2011) (M) (H)

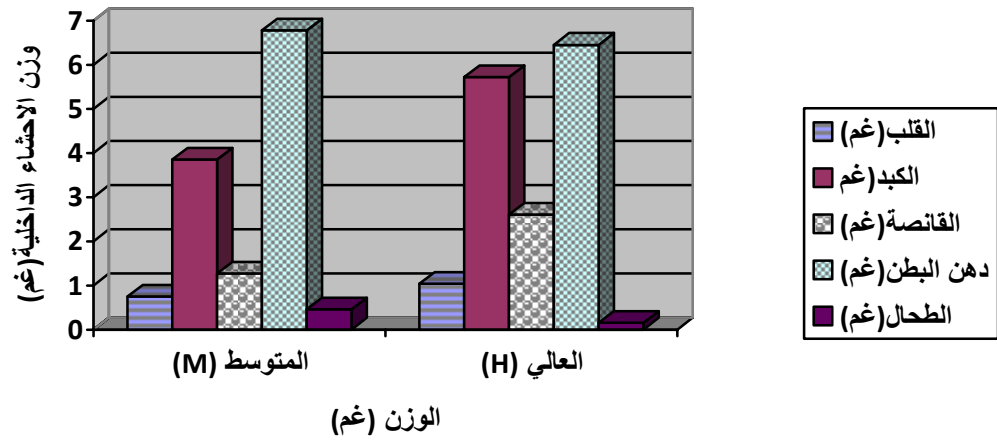
. 3

. 42 700

المتوسطات ± الخطأ القياسي						العوامل لمؤثرة وزن الفرخ (غم)
الأجنحة (%)	الظهر (%)	الرقبة (%)	الوصلة الفخذية (%)	الفخذ (%)	الصدر (%)	
0.44±10.33	0.74±22.50	0.16±5.61	0.28±12.27	0.48±13.23	0.26±32.65	(M) المتوسط
0.21±10.60	0.95±23.67	0.15±6.32	0.07±13.01	0.40±12.77	0.60±33.90	(H) العالي
NS	NS	NS	NS	NS	NS	مستوى المعنوية

(2)

42
(M) (H)
(H)
2.67 18.17 8.13 2.80 24.43 11.33 (M)
(2011)
(H) 700
(M)



. 2

. 42 700

(4)

42

(M)

(H)

%1.46 %0.52

2.80 %1.50 %0.68

. 4

. 42 700

±					()
(%)	(%)	(%)	(%)	(%)	
0.03±0.17	0.38±3.27	0.11±1.116	0.33±3.77	0.06±0.52	(M)
0.01±0.17	0.49±2.41	0.23±1.50	0.20±3.09	0.03±0.68	(H)
N.S.	N.S.	N.S.	N.S.	N.S.	

- . 2011 .
 . 2 .
 . 2000 .
 . 2005 .
 . 2011 .
 . 61- 47: .1 . 6 .
 . 2006 .
 (8)
- Abiola , S . S . , A . O . Afotabi and O . J . Dosunmu. 2008 . Hatchability of chicken eggs as influenced by turning frequency in hurricane tantern incubator . *African J. of Bio.* 7 :4310-4313 .
- Ewart , J . 1993 . Evaluation of genetic selection techniques and their application in the next decade . Gordon Memorial Lecture . *Br . Poultry Sci.* , 34 :3-10 .
- FAO . 2000 . Statistics on Meat Production .
- Fletcher , D . L . 1999 . Broiler breast meat color variation , pH and texture . *Poultry Sci.* , 78 :1323 – 1327 .
- Hulet , R . , G . Gtadv , D . Hill , R . Meijerhof and T . El-Shiekh . 2007 . Influence of egg shell embryonic incubation temperature and broiler breeder flock age on post hatch growth performance and carcass characteristics . *Poultry Sci.* , 86 :408-412 .
- Lilburn , M . S . 1994 . Skeletal growth of commercial poultry species . *Poultry Sci.* , 73 :897-903 .
- National Research Council . 1994 . National Research Council .Nutrient Requirements of Poultry . 9th revised edition , Academy Press , Washington , Dc
- Nazligul , A . , K . Turkyilmaz and H . E . Bardakcioglu . 2005 . Effects of hatching egg weight on hatching chick weight post hatching growth performance and livability in Japanese quails (*Coturnix coturnix japonica*)
- Remignon , H . , J . Zanusso , A . Gaelle and R . Babile . 2000 . Occurrence of giant myofibers according to muscle type , pre or postrigor state and genetic background in turkeys . *Meat Sci.* , 56 :337-343 .

- SAS . Institute . 2001 . SAS User's Guide :. Statistics Version 6.12 end . , SAS institute . Inc . Cary . NC , USA .
- United States Department of Agriculture (USDA) . 1998 . Poultry grading manual agriculture handbook number 31 , Washington .
- Vieira , S . L . , and E . T . , Moran m JR . 1998 . Broiler yields using chicks from egg weight extremes and diverse strains . *Poultry Sci .* , 7 : 339-346.
- Wolanski , N . J . , R . A . Renema , F . E . Robinson , V . L . Carney and B . I . Fancher . 2007 . Relationship among egg characteristics chick measurements and early growth traits in ten broiler breeder strains . *Poultry Sci.*, 86 :1784-1792 .
- Yalcin , S . , Y . Akbas , S . Otles and I . Oguz . 1996 . Effect of maternal Body weight of quail (*Coturuix coturnix japonica*) on progeny performance . Ege Universite Ziraat Fakultesi Cilt . 33 Say 2-3 .

EVALUATION OF TWO CHICKEN WEIGHTS ON PERCENTAGE OF PARTS AND DRESSING OF COBB 700 BROILER AT AGE 42 DAYS

1- PARTS AND DRESSING PERCENTAGE

Bushra, S.R. Zangana

Dep. of Animal Resource- College of Agriculture- University of Baghdad .

ABSTRACT

This study was carried out at the College of Agriculture University of Baghdad aiming to make evaluation of two weighs day old chick(41.0g) medium(M) and higher (H) of (46.06g) in body weight and carcass weight and percent of dressing and cuts and viscera , as it was brought up from hatchery chicks were separated into two categories of chick by 150 chick/category to the age of 42 days , the following results indicated that :-

There were consequential better in live body weight , carcass weight and dressing percentage , also predominant in weight of the carcass main (breast , thigh . drumstick) and secondary cuts (neck , back , wing) for birds resultant from chicks weights highly comparison with weights medium with percent 7.75% and 8.87% respectively .

There were consequential better in weight of heart , giblet , spleen also in percentage weight of the carcass main and secondary parts for birds resultant from chicks weights highly comparison with weights medium were 59.68% and 40.59% comparison with 58.15% and 38.44% respectively .

Key Words : percentage of parts , dressing , broiler .