

\*  
\*\* أستاذ \*

- - -

m.murhum@yahoo.com -

\*\*

(660)

2008 ( 10 - ) 2009

% 86.25 % 66.06 *Haematopinus tuberculatus*  
(P<0.05) % 20

%79.01 (3> - )

. (P<0.05) % 48.10 ( > )

:

. ( 1996 Magid)

%(25-15)

Milnes) ( 1982 Soulsby ; 2003 Otteret)  
(10)

.( 2007

*Haematopinus*

*H. tuberculatus*

.(1986 Meisch Lancaster)

. 2011 / 9 / 26

. 2012 / 4 / 19

	2008	2009
( 10 )	(660)	
%70	(5)	(1.5)
	(KOH)	%10
	(70 80 90 100 ) %	
walker	( 2003 )	( 1982 ) Soulsby
x40 x10	% 37	
(2 1)		<i>Haematopinus tuberculatus</i>
%66.06	(1983 )	
(2008)		%2 . % 58.2
	(1990	Geden)



صورة 1. أنثى القمل الماص *Haematopinus tuberculatus* (20x).



صورة 2. ذكر القمل الماص *Haematopinus tuberculatus* (20x).

(77.5 83.33 86.25)  
 .(1) %20

(6 > -3) %79.01 (3 > - )  
 .(2) %48.10 ( > - ) %77.35  
 (1992) Rawat  
 (2008)  
 K (6 4)

.1

*Haematopinus tuberculatus*

%			
60	30	50	2008
77.5	62	80	2009
56.25	45	80	
86.25	69	80	
76.66	69	90	
83.33	75	90	
61.11	55	90	
42	21	50	
20	10	50	
66.06	436	660	

.2

*H. tuberculatus*

48.10	76	158	( > - )
79.01	64	81	(3> - )
77.35	181	234	(6> -3)
63.82	60	94	(8> -6)
59.13	55	93	(10-8)
66.06	436	660	

(2008)

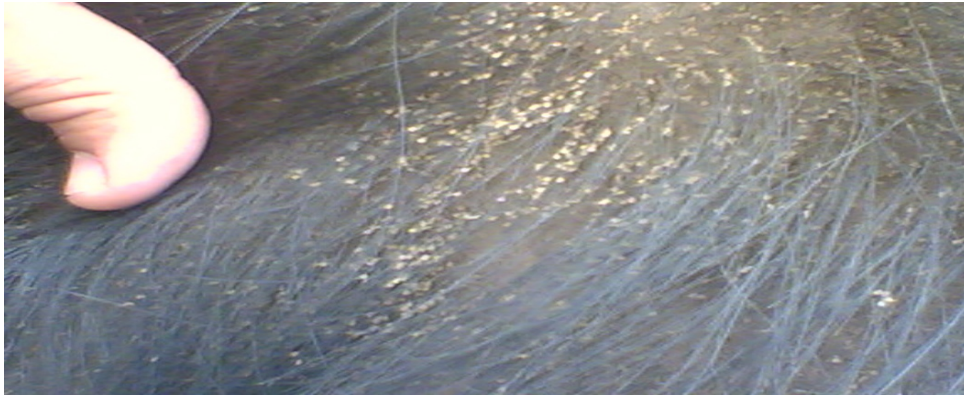
(4 3) (nits)

.(2001)

Green (1986) Meisch Lancaster



صورة 3. بيوض (nits) القمل الماص *Haematopinus tuberculatus* (40x).



صورة 4. البيوض (nits) العيانية للإصابة الشديدة بالقمل الماص *H. tuberculatus*

. 2008 .

*Bubalus bubalis*

. 1983 .

*Gigantocotyle explanantum*

Geden,c.J., D.A. Rutz and D.R .Bishop. 1990.Cattle lice (Anoplura, Mallophaga) in New York: Seasonal population changes, effect of housing type on the infestation of calves and sampling efficiency .J. *Economic Entomology* .83: 1435-1438.

Green, E. D. , M. L.T. Urner, and P.J. S.Ebei. 2001. The functional micromorphology of the Goat biting louse (*Bovicola caprae*).Proceedings of the Microscopy Society of southern Africa 31:62.

Milnes,C.,G. Dalton,and A.Stott.2007. Integrated control strategies for ectoparasites in Scottish sheep flocks. *Livestock Science*, 106:243-253

- Lancaster, J.L. and M.V. Meisch. 1986. *Arthropods in livestock and Poultry production* (Ellis Harwood series in Acarology). Chichester, England, John Wiley and Sons Ltd.
- Magid, S. A. 1996. Buffalo population and production in Iraq. Buffalo Newsletter, 6: 6-8. Milnes, C. ; Dalton, G. and Stott, A. 2007. Integrated control strategies for ectoparasites In Scottish sheep flocks. *Livestock Science*, 106: 243-253.
- Otteret, A. , D. F. Twomey , T. R. Crawshaw and P. Bates. 2003. Anemia and mortality in calves infested with the long nosed sucking louses (*Linognathus vituli*). *Vet. Res.* 153: 176-179.
- Rawat, B. S. , M. C. Trivedi , A. K. Saxena and A. Kumar 1992. Incidence of the Phthiapteran infestation upon the buffaloes of Dehradum (India). *Angew parasitol.*, 22: 17-22.
- Soulsby, E. J. L. 1982. *Helminthes, Arthropods and Protozoa of Domesticated Animals*. 7<sup>th</sup> Ed., Bailliere Tindall, London, UK.
- Walker, A. r. , A. Bouattour J. L. Camicas , A. Estrada- Pena, I. G. Horak, A. A. Latif, R. G. Pegram and P. M. Preson. 2003. *Ticks of domestic animals in Africa: a guide to identification of species*. Atlantia, Houten, The Netherland. Pp 221.,

### ISOLATION AND IDENTIFICATION OF LICE IN BUFFALOES Abe-Ghraib AREA IN BAGHDAD PROVINCE.

Sh. A. Majeed

Amer M. AL-Amery

Azhar A. Faraj

\* College of Veterinary Medicin - University of Baghdad.

E-mail : m.murhum@yahoo.com.

#### ABSTRACT

This study was conducted to detect the louse infection in buffaloes at the Abe Ghrab area in Baghdad province by examining 660 buffaloes hide, to diagnosing with different ages from month to 10 yaers and from both sexes during the period December 2008 up to August 2009.

The study revealed infestation buffaloes with Louse spp. *Haematopinus tuberculatus* at a rate 66.06 % and a highest rate of infestation was 86.25 % in March and the lowest rate of infestation was 20 % in August with significant difference ( $p < 0.05$ ) among month of the study and highest infestation rate at age of (year  $\rightarrow$  3yr) 79.01% and the lowest rate 48.10 % of infestation was in buffaloes at age of (1mo - < year) with significant difference ( $p < 0.05$ ) was conducted .

**Key words:** Lice, biting louse, chwing louse, ectoparasites, Buffaloes